

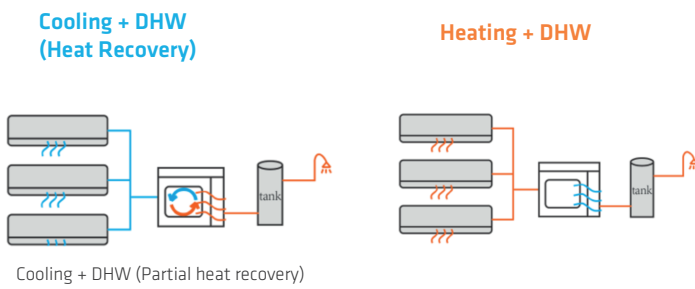


MULTISYSTEM HYBRID RESIDENTIAL PRODUCT RANGE

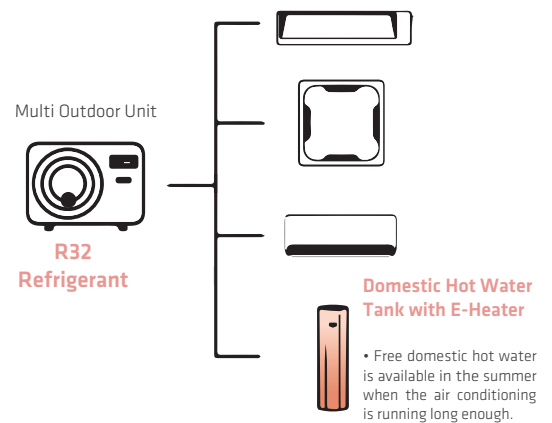
One single outdoor unit connects to maximum 3 indoor air-conditioner units plus domestic hot water tank and heat recovery, works for heating and cooling, provides you free domestic hot water in summer.

Flexibility and Easy Installation

One single outdoor unit connects to maximum 3 indoor airconditioners plus domestic water tank with heat recovery technology, providing you heating, cooling and free domestic hot water in summer. One system for all reasons. All the indoor units are available in different types and shapes, in order to fit the requirement of every types of interior design.



Heat Recovery Solutions



High Efficiency and Energy Savings

Midea multi splits system provides you fast cooling and heating speed and independent room control, free control respectively with less energy cost. The application of heat recovery technology can help you save about 2,600 kilowatt-hours of electricity each summer with the maximum heat recovery efficiency up to 100%.

DC fans

All fan motors in the Kaysun Suite units are direct current. These fans feature low power consumption, excellent efficiency and high performance, accompanied by the idea fan running speed.



Optimal Comfort

Multi splits system can be attached to a variety of indoors units, with pleasant temperature, humidity control and fresh air in every room. You always find the one suits you and enjoy you own space.

WIFI

It is possible to control Kaysun units via a tablet or smartphone as an option. It can be set to manage the units remotely, and programmed weekly.



HR Outdoor units



Model		KAM4HR-80 DR8
Cooling capacity rated	kW	8.2
Heating capacity rated	kW	8.79
Heating capacity rated at -7°C	kW	5.81
Cooling input rated	W	2261
Heating input rated	W	2160
COP at -7°C		3.1
SEER		7.2 - A++
SCOP warm areas		5.1
No. indoor units		4
Compressor type		Rotary
Air flow	m ³ /h	4000
Sound pressure	dB(A)	61
Sound power level	dB(A)	69
Width / Height / Depth	mm	946 / 810 / 410
Net weight	kg	64.3
Power supply	V/ph/Hz	220-240/1/50
Power wiring	mm ²	(2+T)x4
Communication wiring	mm ²	(3+T)x2,5
> Refrigerant		
Type refrigerant		R-32
Refrigerant charge	kg	1.8
Pre-charge meters	m	30
Liquid / Gas pipe diameter	inch	4x 1/4" / 3x 3/8" + 1x 1/2"
Piping total length	m	80
Vertical piping max. length	m	15
Piping max. length (1 indoor unit)	m	35
Height difference between indoor units	m	10
> Working range		
Outdoor ambient temperature for cooling min. / max.	°C	-15 / 50
Outdoor ambient temperature for heating min. / max.	°C	-15 / 24

Cooling and heating capacity. Cooling and heating input. Energy efficiency: The energy coefficients are calculated under standard conditions. The actual operation conditions depend on the place in which the equipment has been installed and the use made of it.

Sound pressure: Measurement of the sound pressure is taken using an anechoic chamber at a distance of 1 m from the machine.

Power wiring: The power wiring is up to 10 m approximately. It must be calculated more precisely for each installation.

Supplementary charge: The initial charging of the outdoor machines is valid for the first 7.5 m (liquid line). A supplementary charge of 0.012 kg/m is required for greater distances per each additional metre.

NOTE: Before installing these units, current legislation regarding refrigerant gases must be consulted.

(*): Check availability. Models available from summer 2022, with the end of stock of the current models.

Indoor units

Casual

KID-05.3 S
Standard



Model		KAY-CF 20 DR12	KAY-CF 26 DR12	KAY-CF 35 DR12	KAY-CF 52 DR12	KAY-CF 71 DR12
Cooling capacity rated	kW	205	263	3.52	5.28	7.03
Heating capacity rated	kW	264	293	3.81	5.57	7.33
Air flow low / medium / high	m ³ /h	259 / 333 / 439	259 / 333 / 439	325 / 430 / 540	540 / 680 / 840	662 / 817 / 980
Sound pressure low / medium / high	dB(A)	25 / 31 / 38	250 / 310 / 380	25 / 34.5 / 40.5	26 / 36 / 42.5	36 / 40.5 / 45
Sound power level	dB(A)	50	50	55	56	59
Width / Height / Depth	mm	715 / 285 / 194	715 / 285 / 194	805 / 285 / 194	957 / 302 / 213	1040 / 327 / 220
Net weight	kg	70	70	7.6	10	12.3
Communication wiring	mm ²	(3+T)x2,5	(3+T)x2,5	(3+T)x2,5	(3+T)x2,5	(3+T)x2,5
Liquid / Gas pipe diameter	inch	1/4" / 3/8"	1/4" / 3/8"	1/4" / 3/8"	1/4" / 1/2"	3/8" / 5/8"

See compatibility of controllers in the range 1x1

KID-06 S
Standard



Prodigy Pro

Model		KAY-P 26 DR12	KAY-P 35 DR12	KAY-P 52 DR12	KAY-P 71 DR12
Cooling capacity rated	kW	2.72	3.52	5.28	7.03
Heating capacity rated	kW	3.13	3.96	5.57	7.33
Air flow low / medium / high	m ³ /h	280 / 360 / 530	290 / 380 / 560	400 / 580 / 685	379 / 724 / 1092
Sound pressure low / medium / high	dB(A)	21.5 / 32 / 40	22 / 34 / 41	23 / 35 / 41	33 / 40 / 44.5
Sound pressure silence	dB(A)(x1)	20.5	21	22	21
Sound power level	dB(A)	55	55	59	65
Width / Height / Depth	mm	857 / 300 / 231	857 / 300 / 231	1024 / 321 / 246	1197 / 371 / 280
Net weight	kg	10.2	10.2	12.3	20
Communication wiring	mm ²	(3+T)x2,5	(3+T)x2,5	(3+T)x2,5	(3+T)x2,5
Liquid / Gas pipe diameter	inch	1/4" / 3/8"	1/4" / 3/8"	1/4" / 1/2"	3/8" / 5/8"

See compatibility of controllers in the range 1x1

KID-05.4 S
Standard



Onnix 2.0

Model		KAY-D 26 DR11	KAY-D 35 DR11	KAY-D 52 DR11
Cooling capacity rated	kW	2.63	3.52	5.28
Heating capacity rated	kW	2.93	3.81	5.57
Air flow low / medium / high	m ³ /h	425 / 515 / 700	425 / 515 / 700	430 / 530 / 750
Sound pressure low / medium / high	dB(A)	21.5 / 32.5 / 40	21.5 / 32.5 / 40	33.5 / 36.5 / 41
Sound power level	dB(A)	53	53	54
Width / Height / Depth	mm	921 / 321 / 211	921 / 321 / 211	921 / 321 / 211
Net weight	kg	11.3	11.3	11.3
Communication wiring	mm ²	(3+T)x2,5	(3+T)x2,5	(3+T)x2,5
Liquid / Gas pipe diameter	inch	1/4" / 3/8"	1/4" / 3/8"	1/4" / 1/2"

See compatibility of controllers in the range 1x1

KID-06 S
Standard



Double Flow Console

Model		KSD-26 DR14-2	KSD-35 DR14-2	KSD-52 DR14-2
Cooling capacity rated	kW	3.52	3.52	5
Heating capacity rated	kW	3.81	3.81	5.28
Air flow low / medium / high	m ³ /h	490 / 580 / 650	490 / 580 / 650	600 / 690 / 780
Sound pressure low / medium / high	dB(A)	27 / 34 / 37	27 / 34 / 37	32 / 38 / 41
Sound power level	dB(A)	54	54	55
Width / Height / Depth	mm	794 / 621 / 200	794 / 621 / 200	794 / 621 / 200
Net weight	kg	14.9	14.9	14.9
Communication wiring	mm ²	(3+T)x2,5	(3+T)x2,5	(3+T)x2,5
Liquid / Gas pipe diameter	inch	1/4" / 3/8"	1/4" / 3/8"	1/4" / 1/2"

See compatibility of controllers in the range 1x1

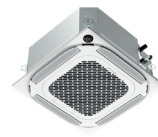
Cooling and heating capacity: The energy coefficients are calculated under standard conditions. The actual operation conditions depend on the place in which the equipment has been installed and the use made of it.

Sound pressure: Measurement of the sound pressure is taken using an anechoic chamber at a distance of 1 m from the machine.

Communication wiring:

NOTE: Before installing these units, current legislation regarding refrigerant gases must be consulted.

KID-06 S
Standard

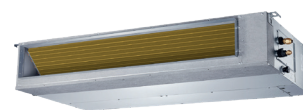


Cassettes 600x600 & 840x840

Model		KCI-20 DMR15	KCI-26 DR15	KCI-35 DR15	KCI-52 DR15	KCIS-71 DR14
Cooling capacity rated	kW	2.05	2.63	3.52	5.28	7.03
Heating capacity rated	kW	2.64	2.93	3.81	5.57	7.62
Air flow low / medium / high	m ³ /h	330 / 520 / 620	330 / 520 / 620	330 / 520 / 620	300 / 540 / 660	1000 / 1140 / 1300
Sound pressure low / medium / high	dB(A)	31.5 / 38.5 / 42	31.5 / 38.5 / 42	31.5 / 38.5 / 42	31.5 / 41 / 44	39.5 / 42.5 / 45.5
Sound power level	dB(A)	55	55	55	59	57
Width / Height / Depth	mm	570 / 245 / 570	570 / 245 / 570	570 / 245 / 570	570 / 245 / 570	830 / 205 / 830
Net weight	kg	16.1	16.1	16.1	16.2	21.6
Communication wiring	mm ²	(3+T)x2,5	(3+T)x2,5	(3+T)x2,5	(3+T)x2,5	(3+T)x2,5
Liquid / Gas pipe diameter	inch	1/4" / 3/8"	1/4" / 3/8"	1/4" / 3/8"	1/4" / 1/2"	3/8" / 5/8"
Panel; Model		KPA-03B 600x600	KPA-03B 600x600	KPA-03B 600x600	KPA-03B 600x600	LCAC KPA4-04B 840x840
Panel; Width / Height / Depth	mm	620 / 50 / 620	620 / 50 / 620	620 / 50 / 620	620 / 50 / 620	950 / 55 / 950
Panel; Net weight	kg	2.5	2.5	2.7	2.7	6

See compatibility of controllers in the range Zen

KCT-04.1 SPSWF
Standard



Ducts

Model		KPD-20 DR15	KPD-26 DR15	KPD-35 DR15	KPD-52 DR15	KPD-71 DR15
Cooling capacity rated	kW	2.05	2.64	3.52	5.28	7.09
Heating capacity rated	kW	2.64	2.93	3.81	6.01	8
Air flow low / medium / high	m ³ /h	450 / 540 / 620	450 / 540 / 620	470 / 570 / 660	650 / 780 / 900	700 / 1000 / 1200
Sound pressure low / medium / high	dB(A)	31 / 33 / 35	31 / 33 / 35	31 / 33 / 35	31 / 34 / 36.5	31 / 32.5 / 33.5
Sound power level	dB(A)	52	52	52	53	56
Max. pressure available	Pa	80	80	80	160	160
Air inlet width/height	mm	599/186	599/186	599/186	892/212	1092/212
Air outlet width/height	mm	537/152	537/152	537/152	827/178	1027/178
Width / Height / Depth	mm	700 / 200 / 506	700 / 200 / 506	700 / 200 / 506	700 / 245 / 750	1000 / 245 / 750
Net weight	kg	16.6	16.6	16.6	24.4	31.8
Communication wiring	mm ²	(3+T)x2,5	(3+T)x2,5	(3+T)x2,5	(3+T)x2,5	(3+T)x2,5
Liquid / Gas pipe diameter	inch	1/4" / 3/8"	1/4" / 3/8"	1/4" / 3/8"	1/4" / 1/2"	3/8" / 5/8"

See compatibility of controllers in the range Zen

Multi Hybrid HR

Compatible with outdoor unit KAM4HR-80 DR8



Model		KTHR-190
Width / Height / Depth	mm	504 / 1660 / 574
Net weight	kg	70
Electrical heater; Standard support	kW	2
Average climate in DHW. Energy class		A+
Average climate in DHW. SCOP,ACS / Load profile		3,40 / L
Average climate in DHW. Keymark certification. Heating time		2h30min
Refrigerant, Liquid pipe	inch	1/4"
Refrigerant, Gas pipe	inch	3/8"

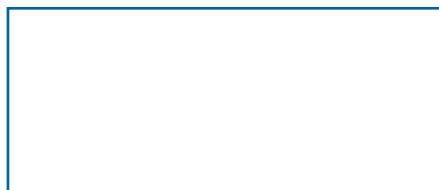
For additional data check Aquatix chapter

Cooling and heating capacity. Cooling and heating input. Energy efficiency: The energy coefficients are calculated under standard conditions. The actual operation conditions depend on the place in which the equipment has been installed and the use made of it.

Sound pressure: Measurement of the sound pressure is taken using an anechoic chamber at a distance of 1 m from the machine.

Supplementary charge: The initial charge of the machines is valid for the first 5 m (liquid line). A supplementary charge of 0.012 kg/m is required for greater distances per each additional metre.

NOTE: Before installing these units, current legislation regarding refrigerant gases must be consulted.



MAIN OFFICE
Blasco de Garay, 4-6
08960 Sant Just Desvern
(Barcelona)
Phone: +34 93 480 33 22
www.frigicoll.es
www.kaysun.es