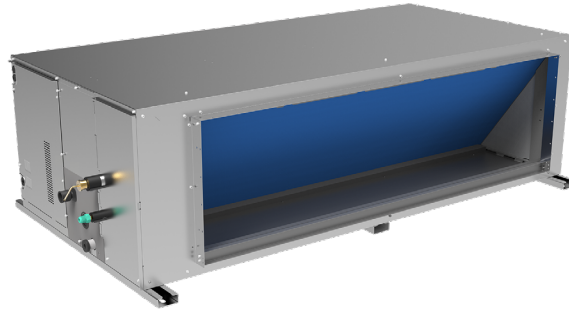


PRODUCT SHEET

High Pressure Duct S8


 KCT-03 SR
Recommended control

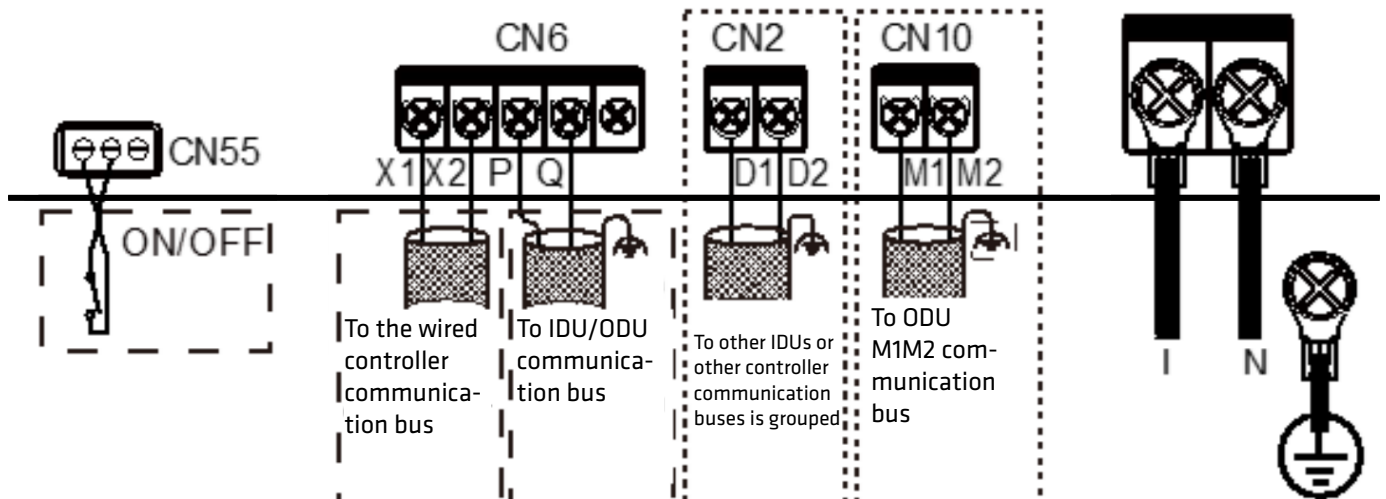
Product certified by:



FEATURES

Model	KPDUF-200 DN5.0	KPDUF-252 DN5.0	KPDUF-280 DN5.0
Nominal cooling capacity	20 kW	25,20 kW	28 kW
Nominal heating capacity	22,50 kW	26 kW	31,50 kW
Consumption	780 W	780 W	780 W
Power supply	220-240/1/50	220-240/1/50	220-240/1/50
MCA: Minimum circuit amperes	8,19 A	8,19 A	8,19 A
MFA: Max. fuse amperes	30 A	30 A	30 A
Air flow rate	2820/3133/3447/3760/4073/4387/4700 m ³ /h	2820/3133/3447/3760/4073/4387/4700 m ³ /h	2820/3133/3447/3760/4073/4387/4700 m ³ /h
Max. static pressure	400 Pa	400 Pa	400 Pa
Sound pressure	42/43/44/46/48/50/51 dB(A)	42/43/44/46/48/50/51 dB(A)	42/43/44/46/48/50/51 dB(A)
Liquid pipe diameter	9,52 mm	12,70 mm	12,70 mm
Gas pipe diameter	19,1 mm	22,20 mm	22,20 mm

CIRCUIT DIAGRAM

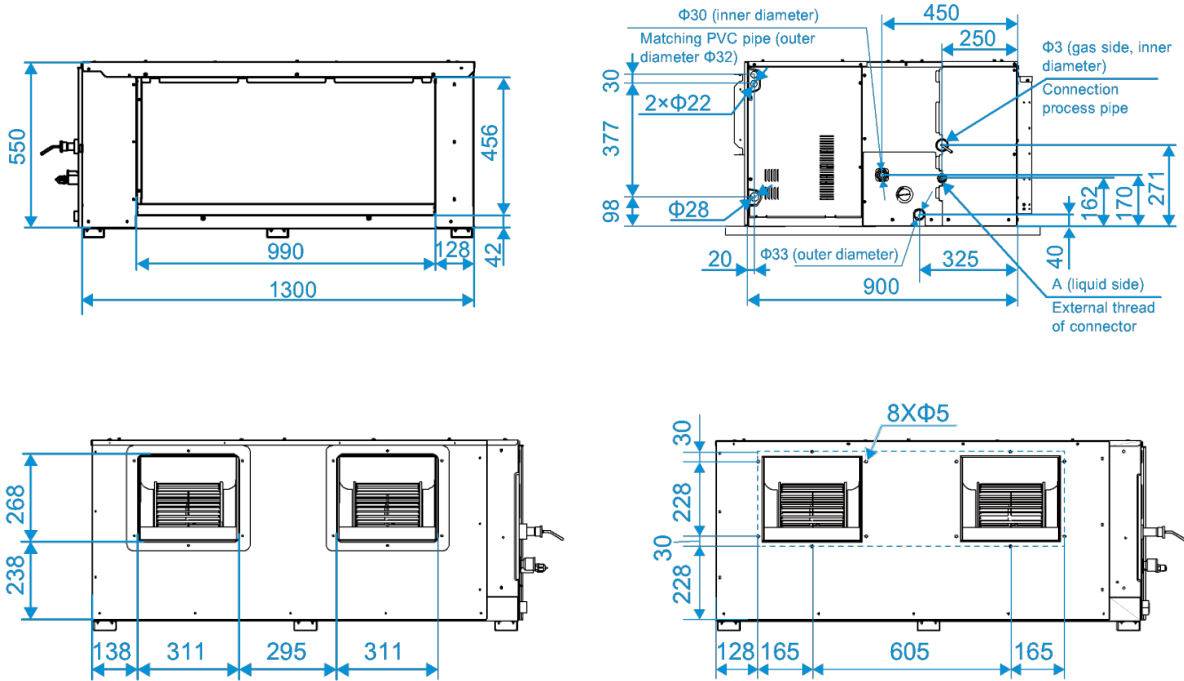


NOTES:

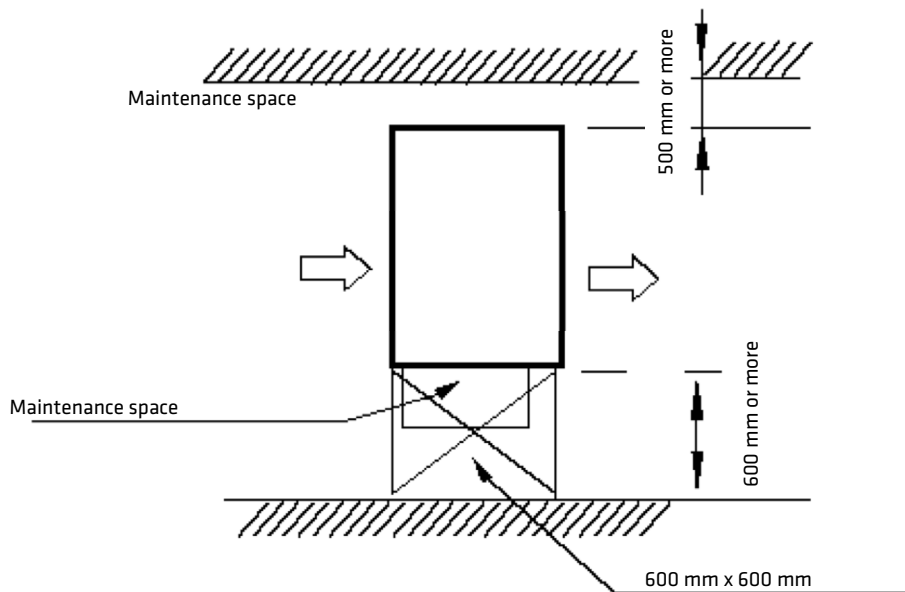
- (1) The data and specifications in this sheet are subject to change without notice.
- (2) The images in this sheet are for guidance only and may be different from the actual machine.
- (3) Cooling capacity conditions: Indoor temperature 27°C DB/19°C WB; Outdoor temperature 35°C DB; Equivalent refrigerant piping length 7.5 m with zero level difference; Data calculated with Duct type indoor unit. Heating capacity conditions: Indoor temperature 20°C DB; Outdoor temperature 7°C DB/6°C WB; Equivalent refrigerant piping length 7.5 m with zero level difference; Data calculated with Duct type indoor unit.
- (4) Sound pressure level is measured at a position 1 m in front of the unit and 1.3 m above the floor in a semi-anechoic chamber.

DIMENSIONS & WEIGHT

	KPDUF-200 DN5.0	KPDUF-252 DN5.0	KPDUF-280 DN5.0
Inner unit weight	125 kg	125 kg	125 kg

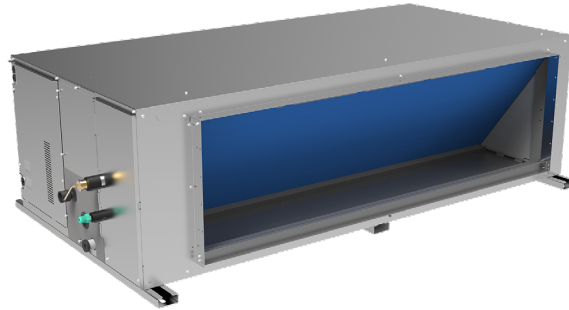


INSTALLATION



PRODUCT SHEET

High Pressure Duct S8


 KCT-03 SR
Recommended control

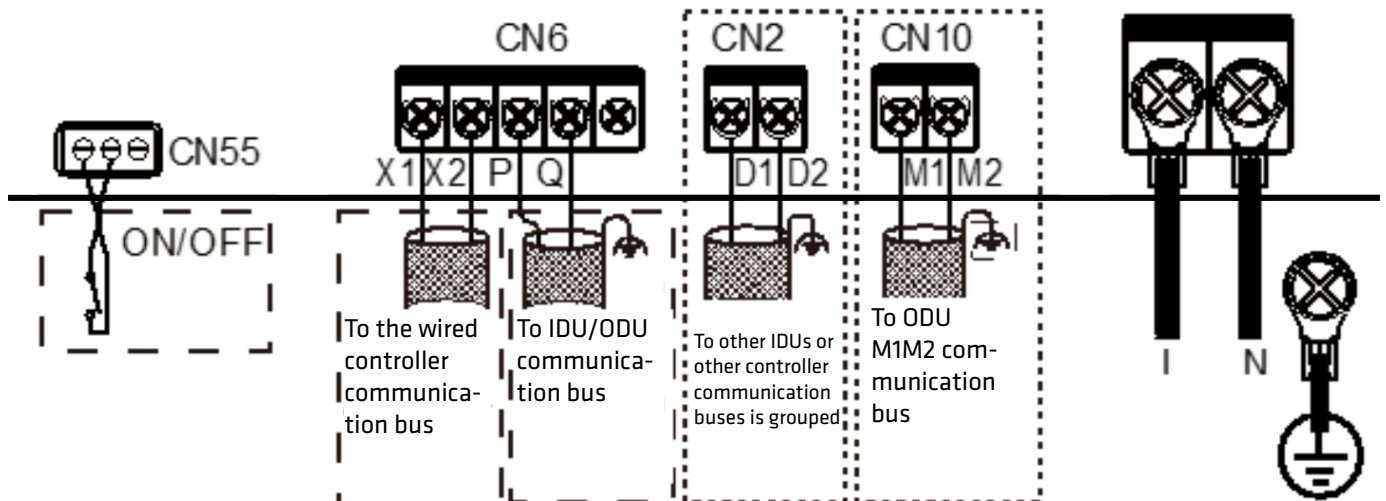
Product certified by:



FEATURES

Model	KPDUF-400 DN5.0	KPDUF-450 DN5.0	KPDUF-560 DN5.0
Nominal cooling capacity	40 kW	45 kW	56 kW
Nominal heating capacity	45 kW	56 kW	63 kW
Consumption	1850 W	1850 W	2030 W
Power supply	220-240/1/50	220-240/1/50	220-240/1/50
MCA: Minimum circuit amperes	12,98 A	12,98 A	15,49 A
MFA: Max. fuse amperes	30 A	30 A	30 A
Air flow rate	4.500/5.500/6.000/6.500/7.000/7.500 m ³ /h	4.500/5.500/6.000/6.500/7.000/7.500 m ³ /h	5040/5600/6160/6720/7280/7840/8400 m ³ /h
Max. static pressure	400 Pa	400 Pa	400 Pa
Sound pressure	48/49/50/52/54/56/58 dB(A)	48/49/50/52/54/56/58 dB(A)	49/51/53/54/56/58/59 dB(A)
Liquid pipe diameter	12,70 mm	15,90 mm	15,90 mm
Gas pipe diameter	25,40 mm	28,60 mm	28,60 mm

CIRCUIT DIAGRAM

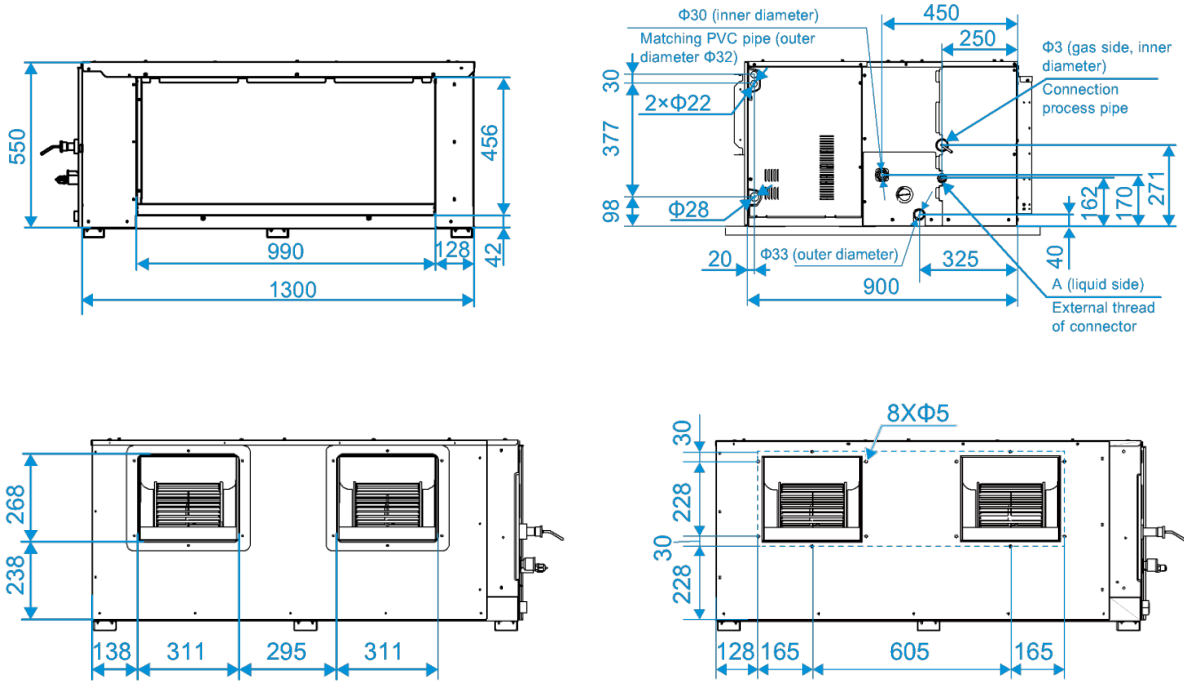


NOTES:

- (1) The data and specifications in this sheet are subject to change without notice.
- (2) The images in this sheet are for guidance only and may be different from the actual machine.
- (3) Cooling capacity conditions: Indoor temperature 27°C DB/19°C WB; Outdoor temperature 35°C DB; Equivalent refrigerant piping length 7.5 m with zero level difference; Data calculated with Duct type indoor unit. Heating capacity conditions: Indoor temperature 20°C DB; Outdoor temperature 7°C DB/6°C WB; Equivalent refrigerant piping length 7.5 m with zero level difference; Data calculated with Duct type indoor unit.
- (4) Sound pressure level is measured at a position 1 m in front of the unit and 1.3 m above the floor in a semi-anechoic chamber.

DIMENSIONS & WEIGHT

	KPDUF-400 DN5.0	KPDUF-450 DN5.0	KPDUF-560 DN5.0
Inner unit weight	166 kg	166 kg	170 kg



INSTALLATION

