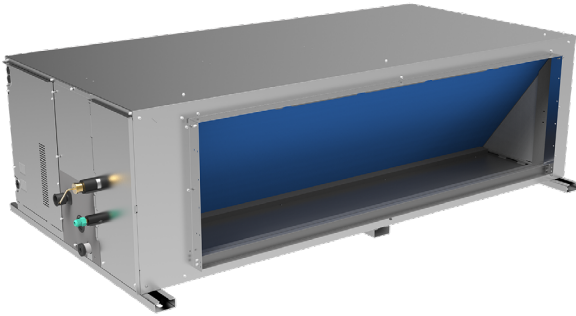


High Pressure Front Air Discharge


KPDHF-200F DN2

PRODUCT SHEET



KCT-04 SR
Standard controller



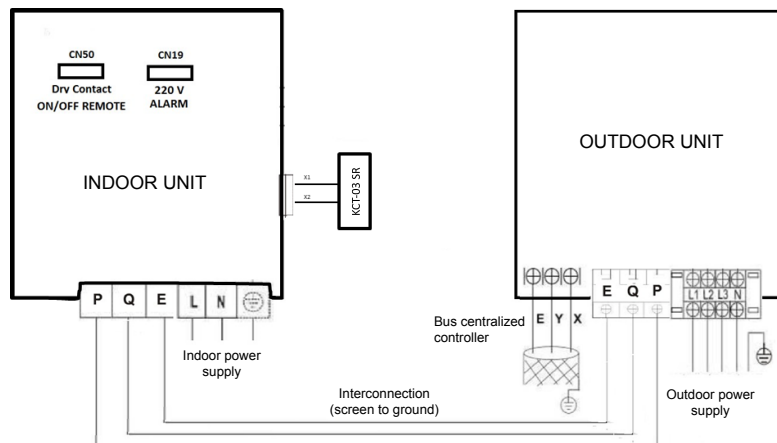
Product certified by: 



FEATURES

Model	KPDUF-200F DN4
Cooling capacity	20 kW
Cooling power input	5.280 W
Heating capacity	22,50 kW
Heating power input	4.430 W
Airflow (indoor)	2.820/3.447/3.760/4.073/4.387/4.700 m ³ /h
Max. static pressure	42/43/44/46/48/50/51 dB(A)
Sound pressure (indoor)	400 Pa
Airflow (outdoor)	9.000 m ³ /h
Sound pressure (outdoor)	58 dB(A)
Power supply (indoor)	220-240 V / 1 / 50 Hz
Power supply (outdoor)	380-415 V / 3 / 50 Hz
Power wiring (indoor)	(2+T)x4 mm ²
Power wiring (outdoor)	(4+T)x6 mm ²
Max. input	18 A
Com. bus shielded	3x0,75 mm ²

WIRING DIAGRAM



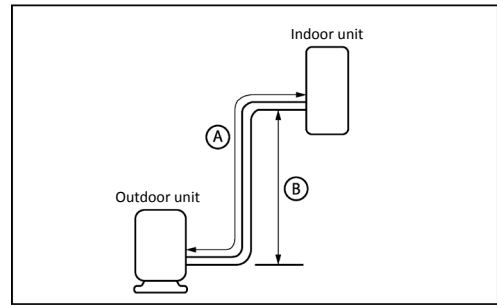
NOTES:

- (1) The data and specifications present in this sheet may vary without notice.
 (2) The images on this sheet are indicative and may be different from the final machine.

COOLING CONNECTION

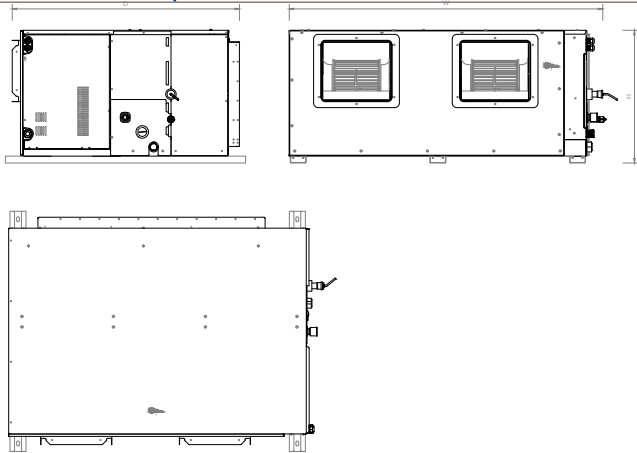
Model	
Refrigerating pipes	Ø3/8" / Ø3/4"
Refrigerant charge	6,50 kg
Indoor drain pipe	Ø32
Max. pipe length (A)	50 m
Max. level difference (B)	25 m

KPDUF-200F DN4



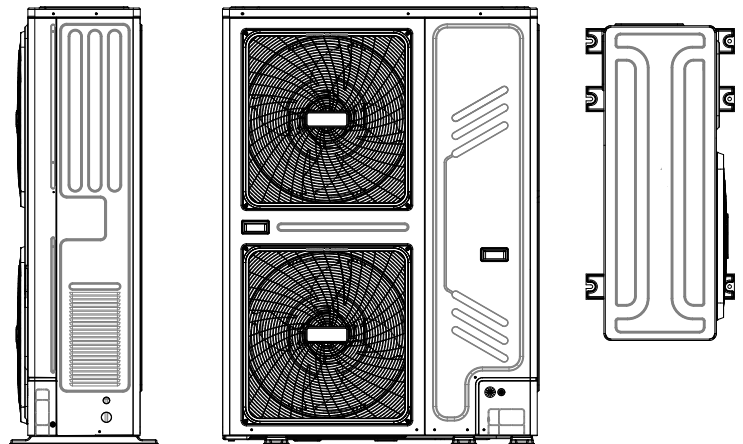
DIMENSIONS & WEIGHT INDOOR

Model	KPDUF-200 DN5.0
Width	1.300 mm
Height	580 mm
Depth	900 mm
Weight	125 kg

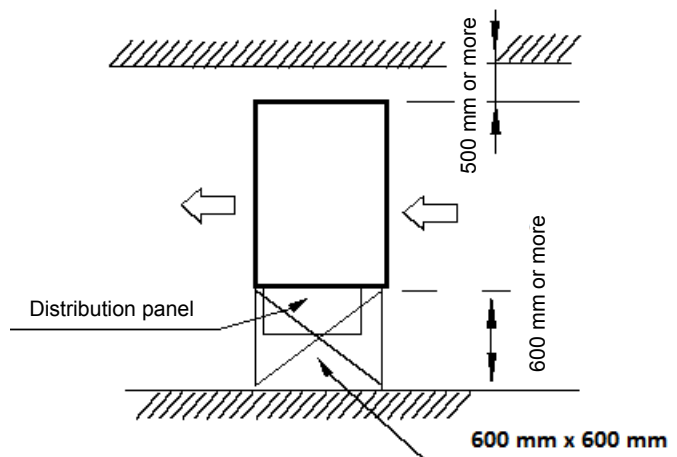
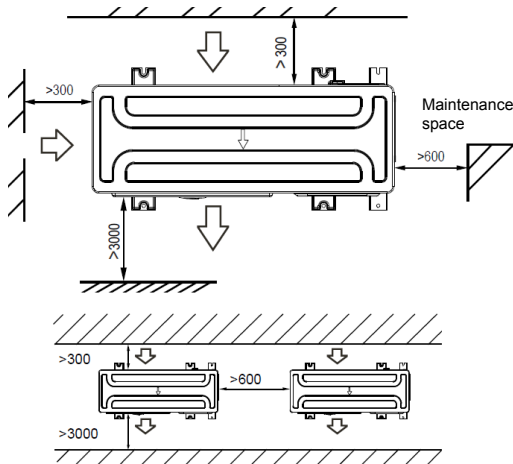


DIMENSIONS & WEIGHT OUTDOOR

Model	KMF-200 DN4
Width	1.120 mm
Height	1.558 mm
Depth	528 mm
Weight	143 kg



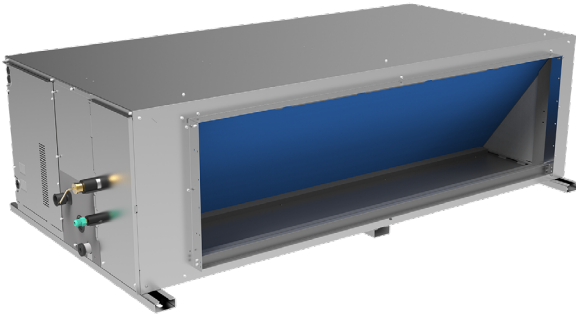
INSTALLATION



High Pressure Front Air Discharge


KPDHF-250F DN4

PRODUCT SHEET



KCT-03 SR
Standard controller



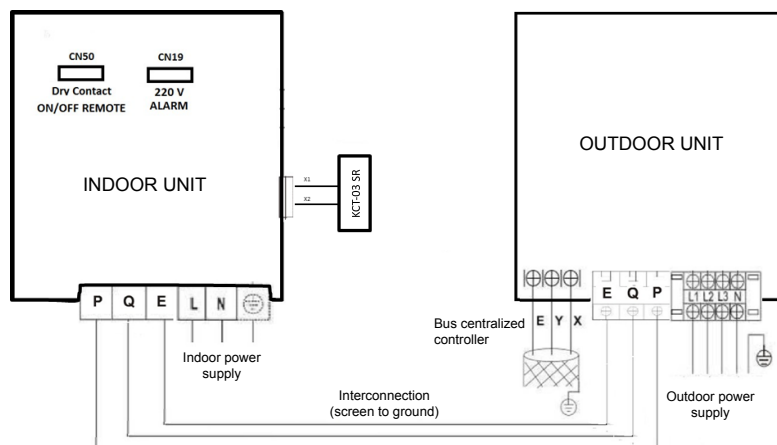
Product certified by: 



FEATURES

Model	KPDHF-250F DN4
Cooling capacity	26 kW
Cooling power input	10.040 W
Heating capacity	28,50 kW
Heating power input	6.860 W
Airflow (indoor)	2.820/3.447/3.760/4.073/4.387/4.700 m ³ /h
Max. static pressure	42/43/44/46/48/50/51 dB(A)
Sound pressure (indoor)	400 Pa
Airflow (outdoor)	10.000 m ³ /h
Sound pressure (outdoor)	59 dB(A)
Power supply (indoor)	220-240 V / 1 / 50 Hz
Power supply (outdoor)	380-415 V / 3 / 50 Hz
Power wiring (indoor)	(2+T)x4 mm ²
Power wiring (outdoor)	(4+T)x6 mm ²
Max. input	23 A
Com. bus shielded	3x0,75 mm ²

WIRING DIAGRAM



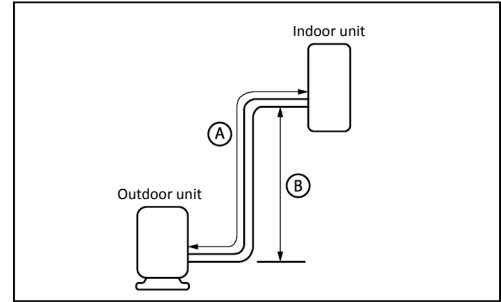
NOTES:

- (1) The data and specifications present in this sheet may vary without notice.
 (2) The images on this sheet are indicative and may be different from the final machine.

COOLING CONNECTION

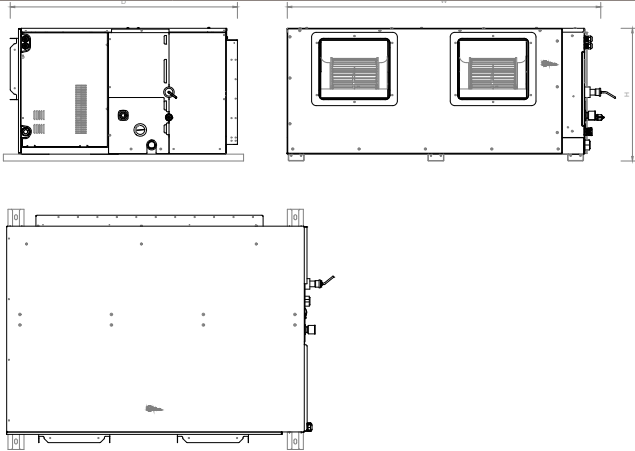
Model	
Refrigerating pipes	Ø3/8" / Ø3/4"
Refrigerant charge	6,50 kg
Indoor drain pipe	Ø32
Max. pipe length (A)	50 m
Max. level difference (B)	25 m

KPDHF-250F DN24



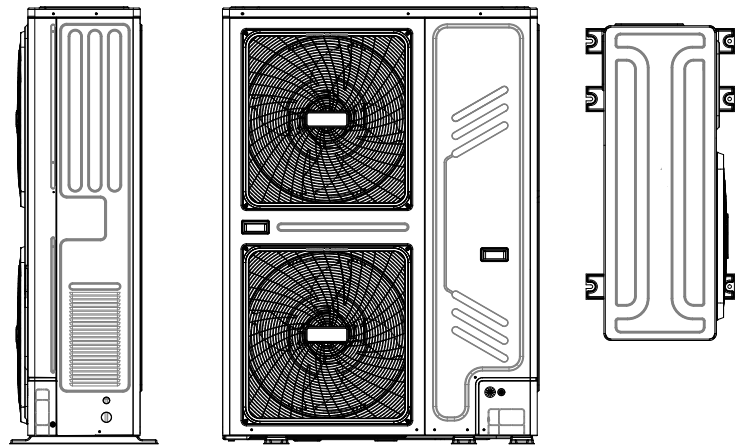
DIMENSIONS & WEIGHT INDOOR

Model	KPDUF-252 DN5.0
Width	1.300 mm
Height	580 mm
Depth	900 mm
Weight	125 kg

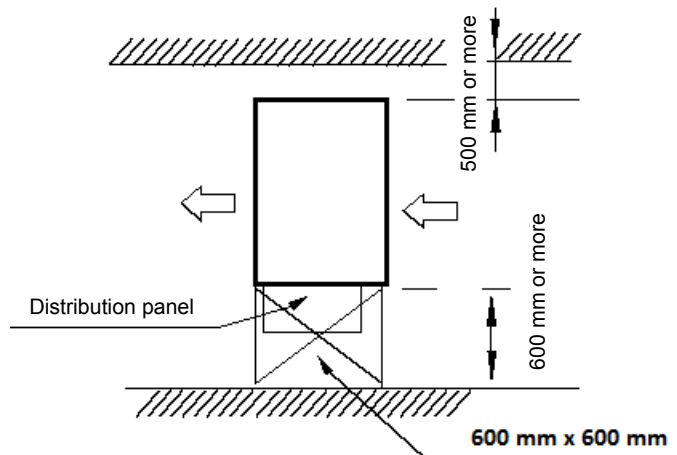
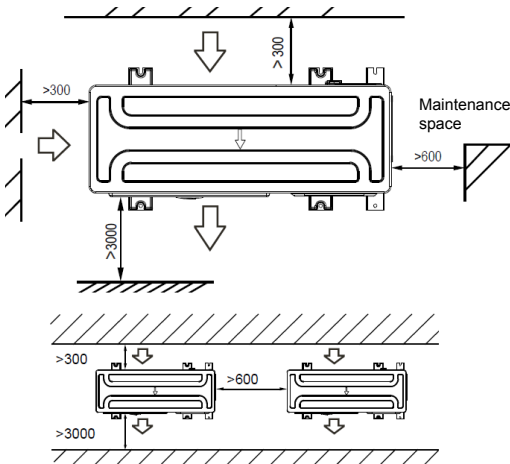


DIMENSIONS & WEIGHT OUTDOOR

Model	KMF-260 DN4
Width	1.120 mm
Height	1.558 mm
Depth	528 mm
Weight	143 kg



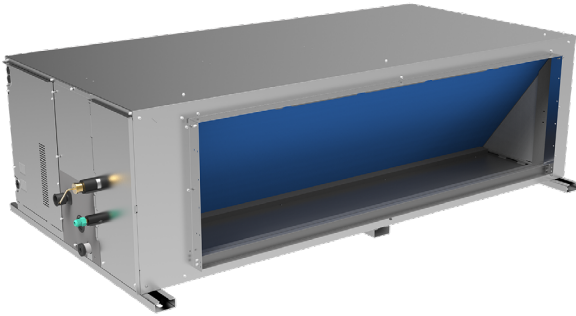
INSTALLATION



High Pressure Front Air Discharge


KPDHF-280F DN4

PRODUCT SHEET



KCT-04 SR
Standard controller



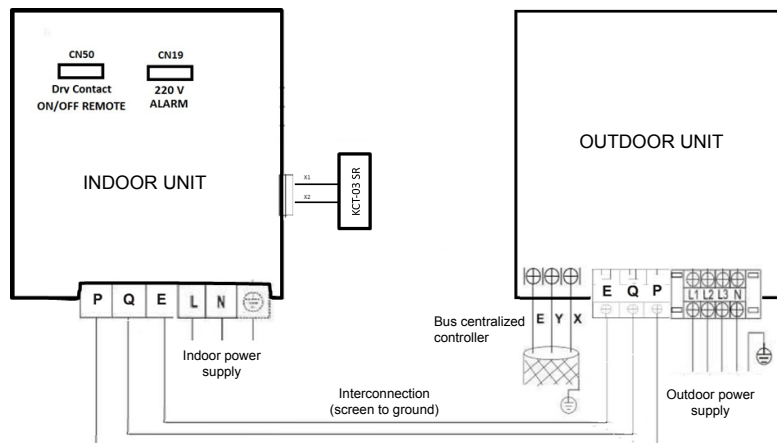
Product certified by: 



FEATURES

Model	KPDHF-280F DN4
Cooling capacity	28,50 kW
Cooling power input	12.020 W
Heating capacity	31,50 kW
Heating power input	7.550 W
Airflow (indoor)	2.820/3.447/3.760/4.073/4.387/4.700 m ³ /h
Max. static pressure	42/43/44/46/48/50/51 dB(A)
Sound pressure (indoor)	400 Pa
Airflow (outdoor)	11.000 m ³ /h
Sound pressure (outdoor)	59 dB(A)
Power supply (indoor)	220-240 V / 1 / 50 Hz
Power supply (outdoor)	380-415 V / 3 / 50 Hz
Power wiring (indoor)	(2+T)x4 mm ²
Power wiring (outdoor)	(4+T)x6 mm ²
Max. input	23 A
Com. bus shielded	3x0,75 mm ²

WIRING DIAGRAM



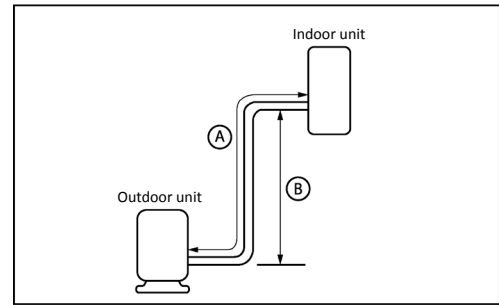
NOTES:

- (1) The data and specifications present in this sheet may vary without notice.
 (2) The images on this sheet are indicative and may be different from the final machine.

COOLING CONNECTION

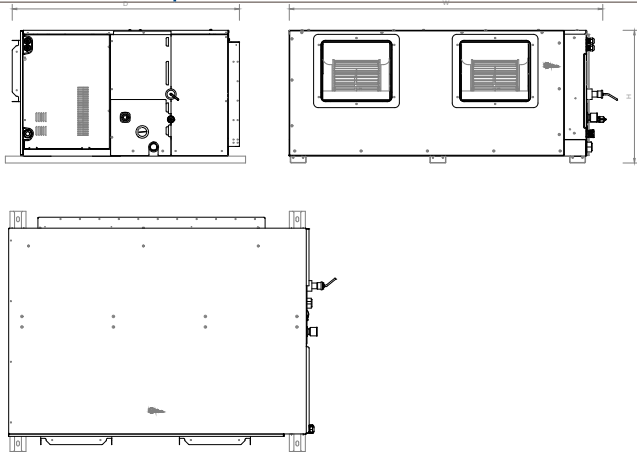
Model	
Refrigerating pipes	Ø1/2" / Ø7/8"
Refrigerant charge	6,50 kg
Indoor drain pipe	Ø32
Max. pipe length (A)	50 m
Max. level difference (B)	25 m

KPDHF-280F DN4



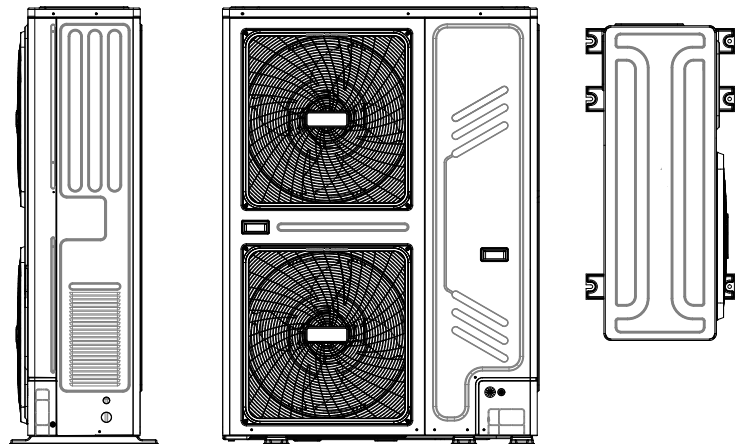
DIMENSIONS & WEIGHT INDOOR

Model	KPDUF-280 DN5.0
Width	1.300 mm
Height	580 mm
Depth	900 mm
Weight	125 kg



DIMENSIONS & WEIGHT OUTDOOR

Model	KMF-280 DN4
Width	1.120 mm
Height	1.558 mm
Depth	528 mm
Weight	143 kg



INSTALLATION

